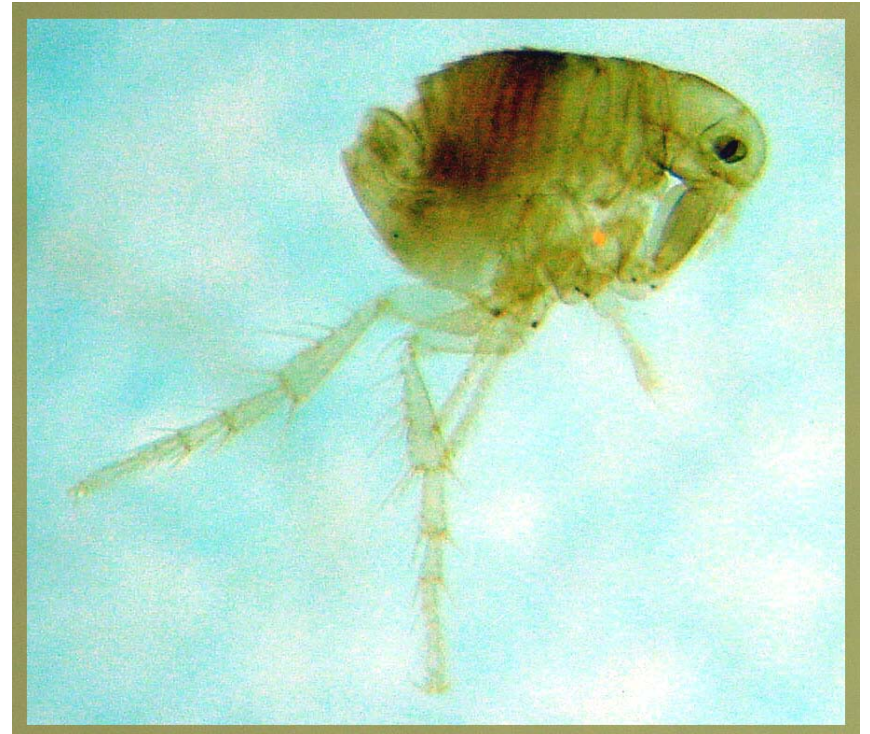
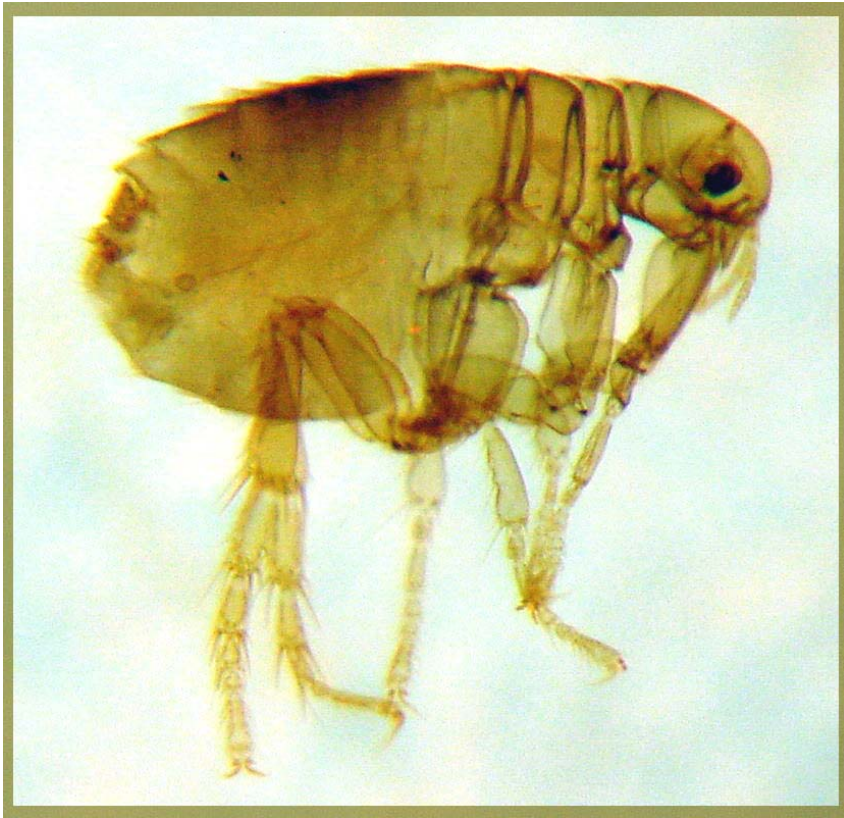
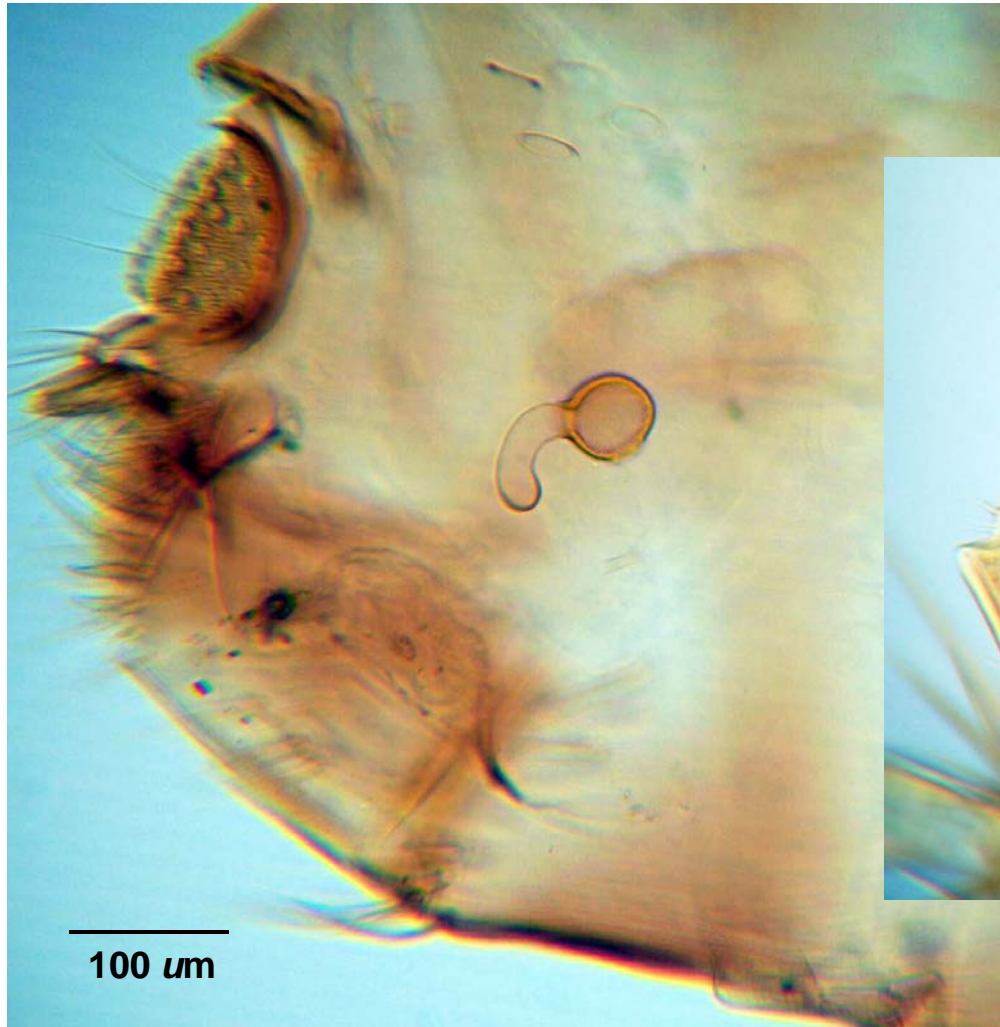


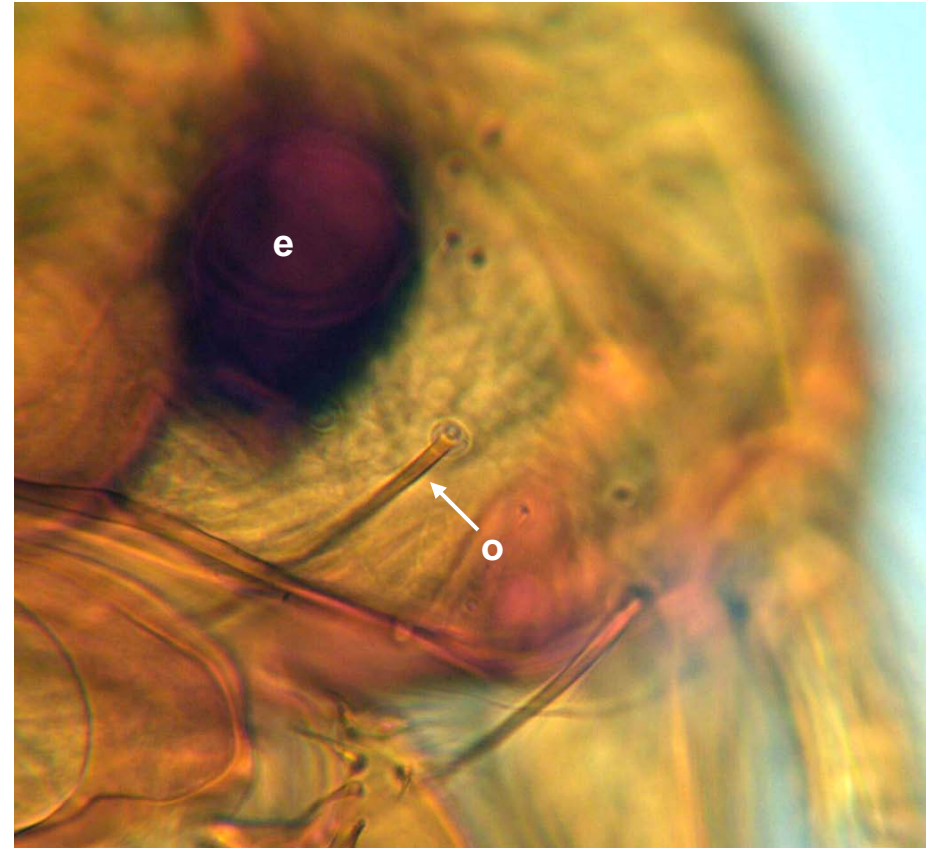
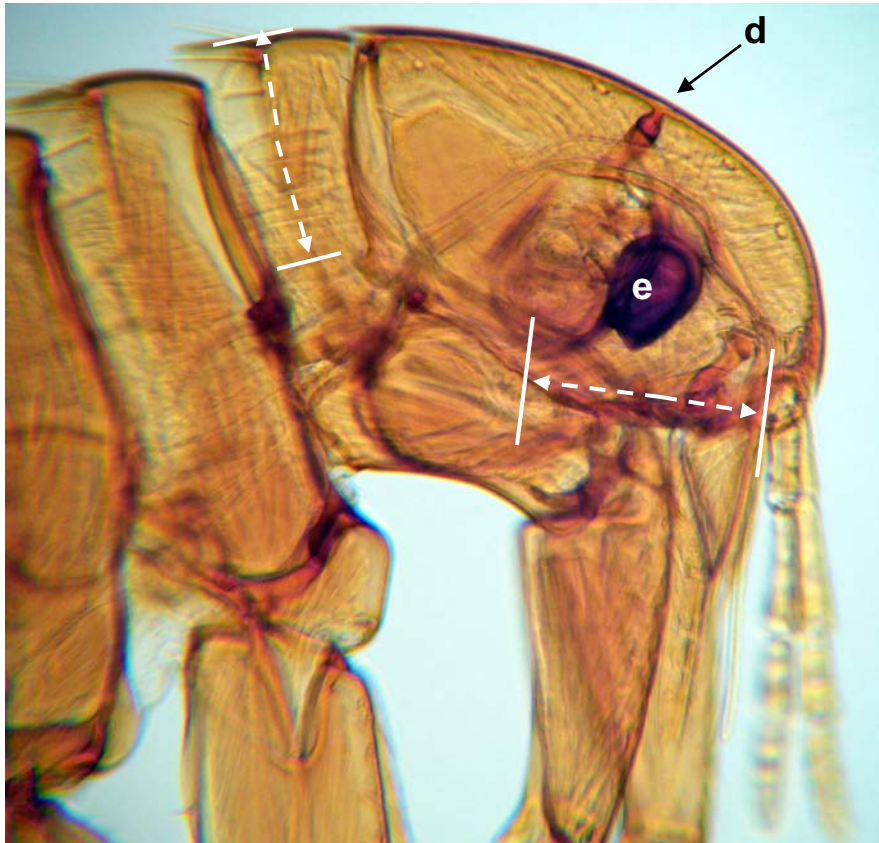
*Pulex irritans* female (left) and male (right).  
Note the absence of both genal and pronotal ctenidia.



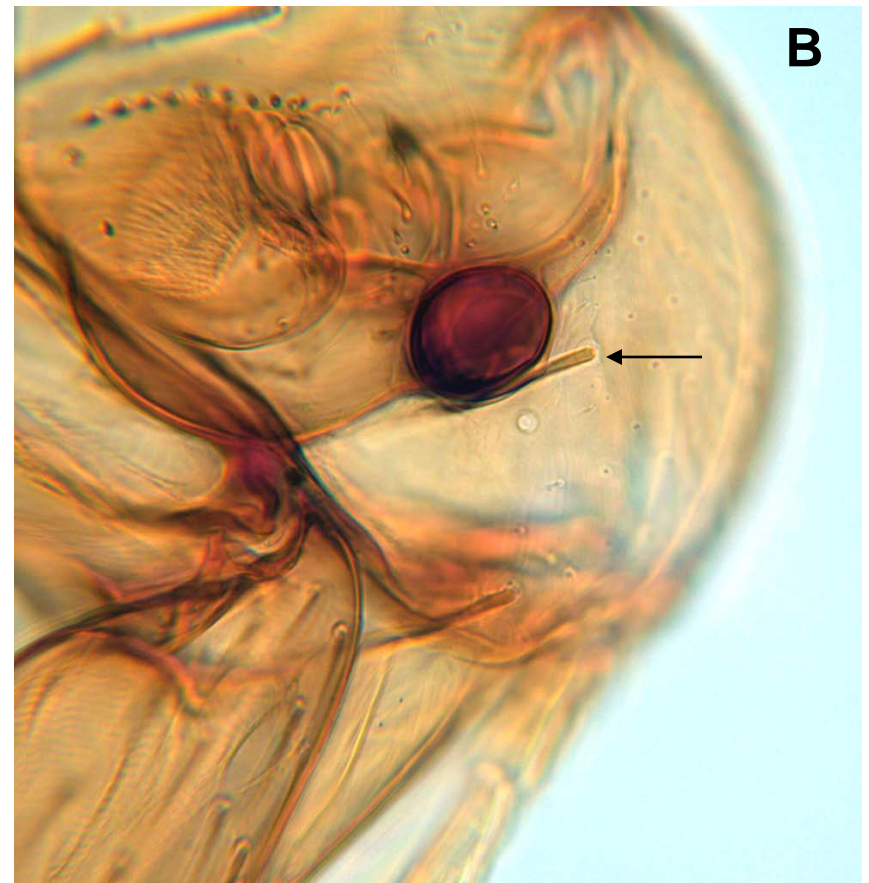
*Pulex irritans*: female spermatheca (left); male genitalia (right).



*Pulex irritans*: female, anterior. Note the absence of genal and pronotal ctenidia (regions of dashed arrows) and ocular bristle at lower portion of eye. Legend: d, dorsal sulcus; e, eye; o, ocular bristle.



Note position of ocular bristle (arrows); below eye in *Pulex* (A), and at mid-level of eye in *Xenopsylla* (B). Members of both genera lack genal and pronotal ctenidia.



*Pulex irritans*: female, mouth parts. Legend: e, epipharynx; l, labial palps; m, maxilla (stipes of some authors); md, mandibles (maxillary laciniae of some authors); mp, maxillary palps.

